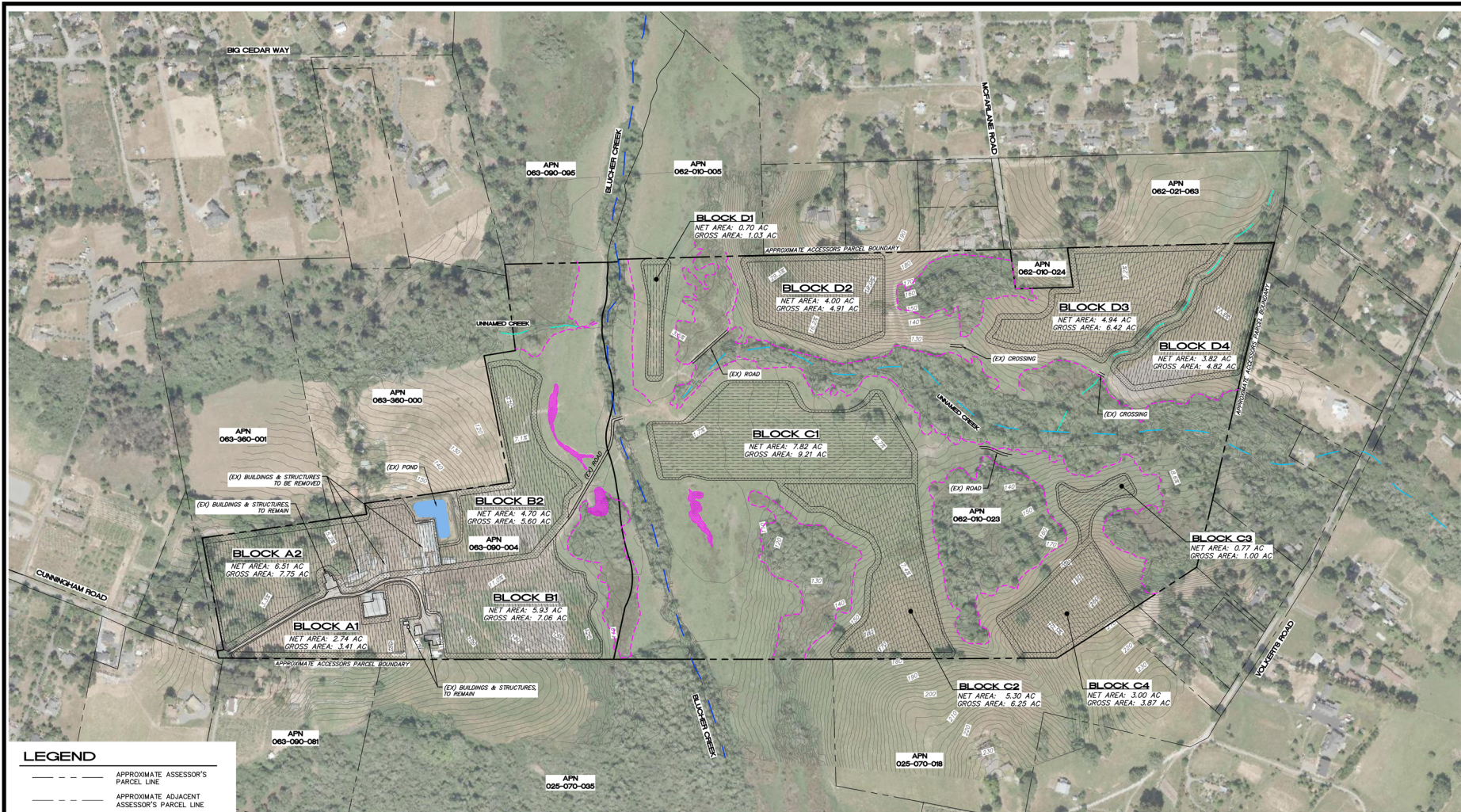


P:\ACE - JOBS\2022\36-22 1610 CUNNINGHAM ROAD\DWG\36-22 PLANTABLE MAP.DWG 3/7/2022 5:04 PM



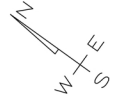
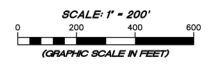
LEGEND

- APPROXIMATE ASSESSOR'S PARCEL LINE
- APPROXIMATE ADJACENT ASSESSOR'S PARCEL LINE
- (EX) BLUELINE STREAM, RIPARIAN CORRIDOR (RC) WITH 25' NO-TOUCH AG SETBACK
- (EX) STREAM, RIPARIAN CORRIDOR (RC) WITH 25' NO-TOUCH AG SETBACK
- (EX) STREAM, APPROXIMATE BASED ON AERIAL IMAGERY
- TB---TB--- (EX) TOP OF BANK
- (EX) ACCESS ROAD
- VNE ROW
- VINEYARD AVENUE
- [Hatched Box] POTENTIAL WETLAND AREA WITH PONDED WATER SEE NOTES
- [Dashed Box] DENSE VEGETATION AND POTENTIAL WETLAND AREA SEE NOTES

NOTES

1. PARCEL ZONING
 APN: 063-090-004 - DA B6 40, RC200/25
 APN: 063-010-023 - DA B6 20, RC100/25, RC 200/25
2. PER ZONING CODE 25' NO TOUCH SETBACK FROM TOP OF BANK OF RIPARIAN CORRIDOR STREAMS.
3. ASSUMED 50' NO TOUCH SETBACK FROM LIMITS OF POTENTIAL WETLAND AREA - POTENTIAL WETLAND AREA IS SHOWN BASED ON HISTORICAL AERIAL IMAGERY SHOWING SIGNS OF RECURRING PONDED WATER AND POTENTIAL WETLAND PLANT SPECIES.
 - AT TIME OF VINEYARD PLAN DEVELOPMENT, A BIOLOGIST SHOULD BE CONSULTED TO DETERMINE ACTUAL LIMITS OF WETLAND AREAS.
3. EXISTING STREAM CROSSINGS ARE SHOWN FOR REFERENCE ONLY. DRAINAGE CAPACITY OF EXISTING UTILITIES WAS NOT ANALYZED.
4. ACCESS TO ALL VINEYARD BLOCKS SHOWN SHOULD BE CONFIRMED BY OWNER.

PRELIMINARY VINEYARD PLANTABLE AREA MAP



VINEYARD DEVELOPMENT AREA TABLE

BLOCK	NET PLANTABLE AREA (AC)	GROSS PLANTABLE AREA (AC)
A1	2.74	3.41
A2	6.51	7.75
B1	5.93	7.06
B2	4.70	5.60
C1	7.62	9.21
C2	5.30	6.25
C3	0.77	1.00
C4	3.00	3.67
D1	0.70	1.03
D2	4.00	4.91
D3	4.94	6.42
D4	3.82	4.62
TOTAL	50.25	61.32

CUNNINGHAM ROAD VINEYARD
 VINEYARD LAYOUT + EROSION CONTROL PLAN
 APN 063-090-004 TO 063-090-081
 1610 CUNNINGHAM ROAD
 BEAUSTOPOL, CA 95472

DATE: MAR 3, 2022
 JOB NO.: 36-22
 SHEET NO.: 1
 OF 1 SHEETS

MUNSELLE CIVIL ENGINEERING
 CIVIL ENGINEERING • LAND PLANNING
 815 CENTER STREET
 FOLSOM, CA 95648
 (916) 992-0066

DATE: 3/7/2022
 DRAWN BY: [Signature]
 CHECKED BY: [Signature]
 PROJECT NO.: 36-22